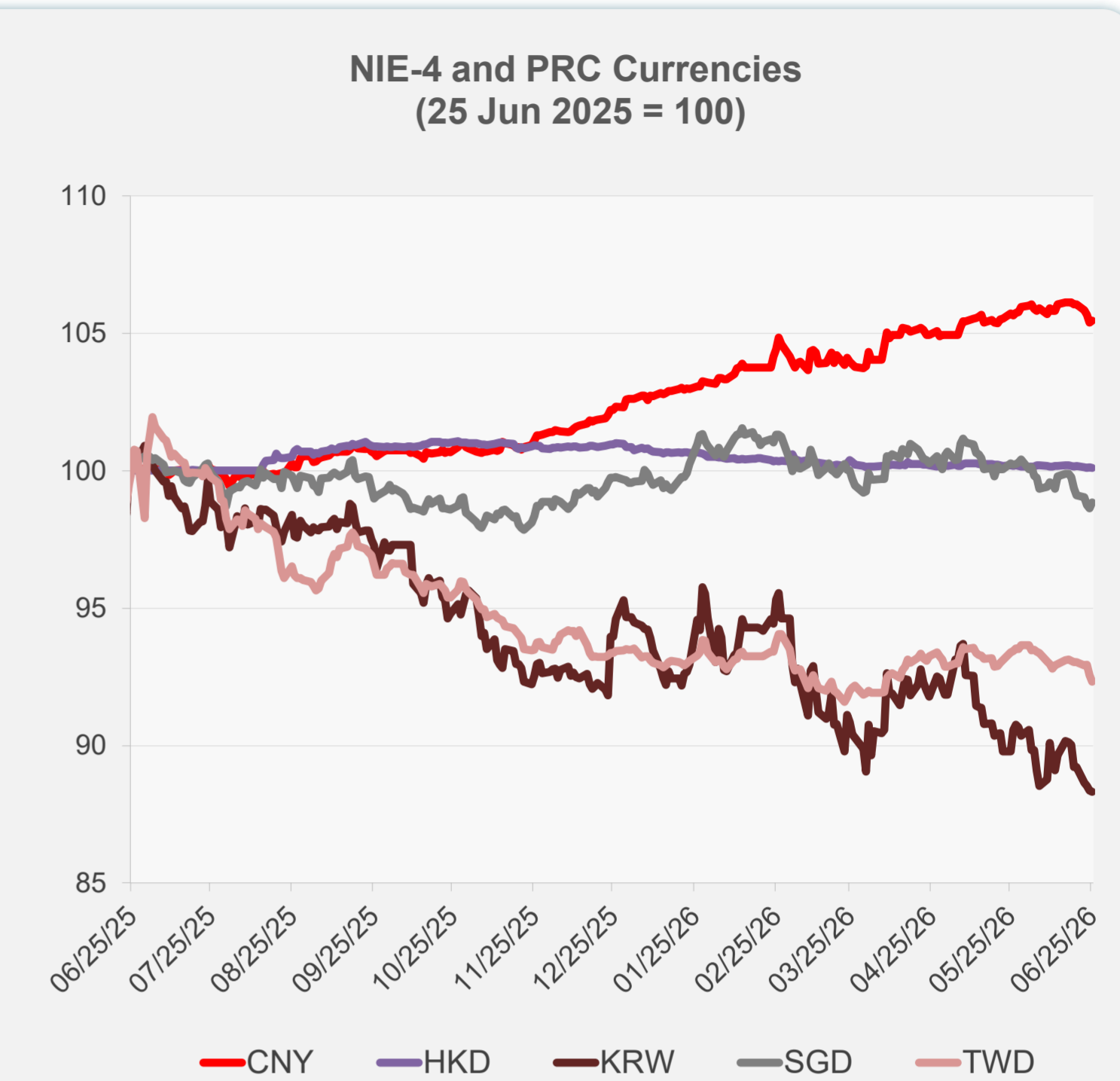
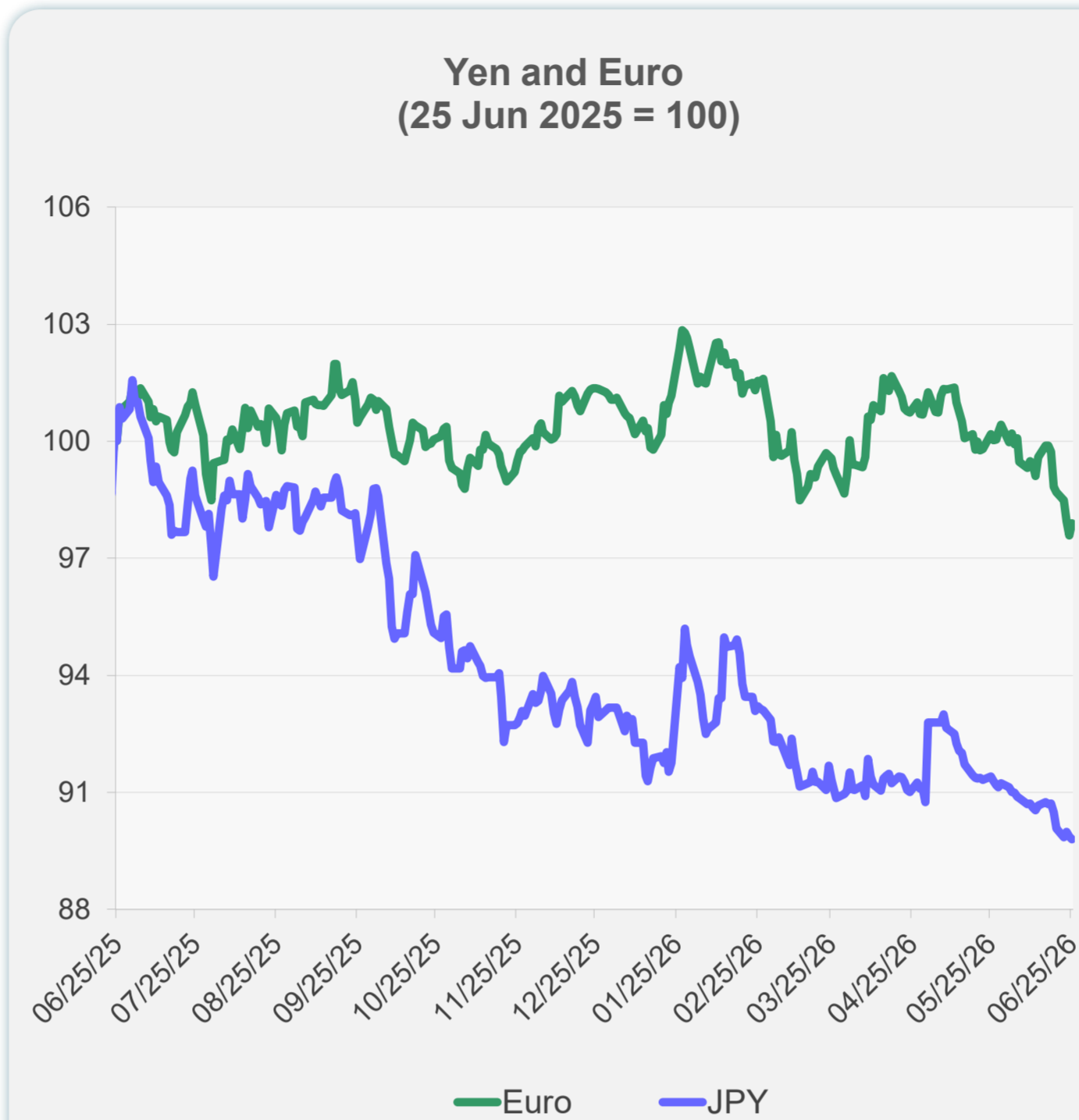
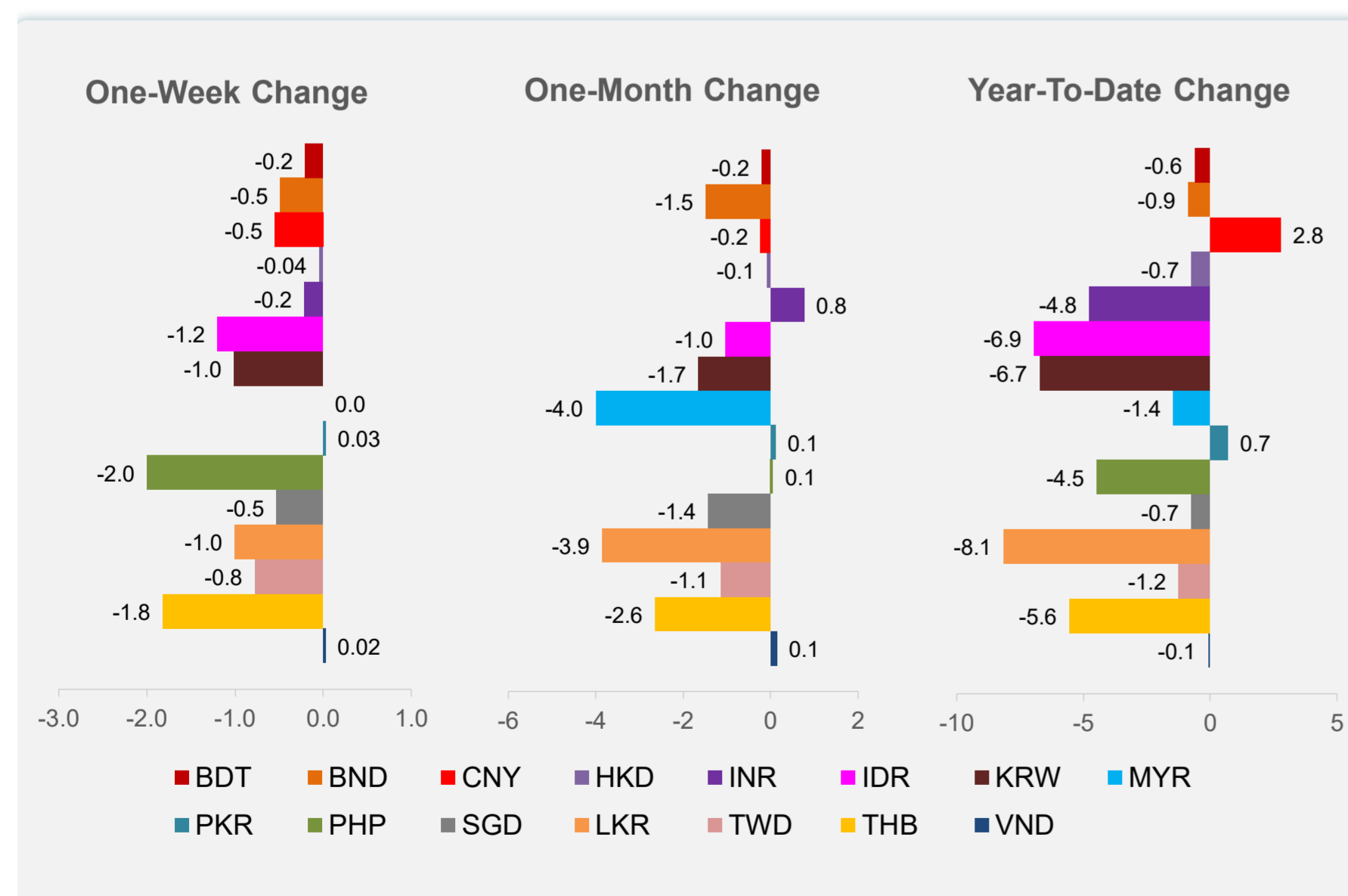
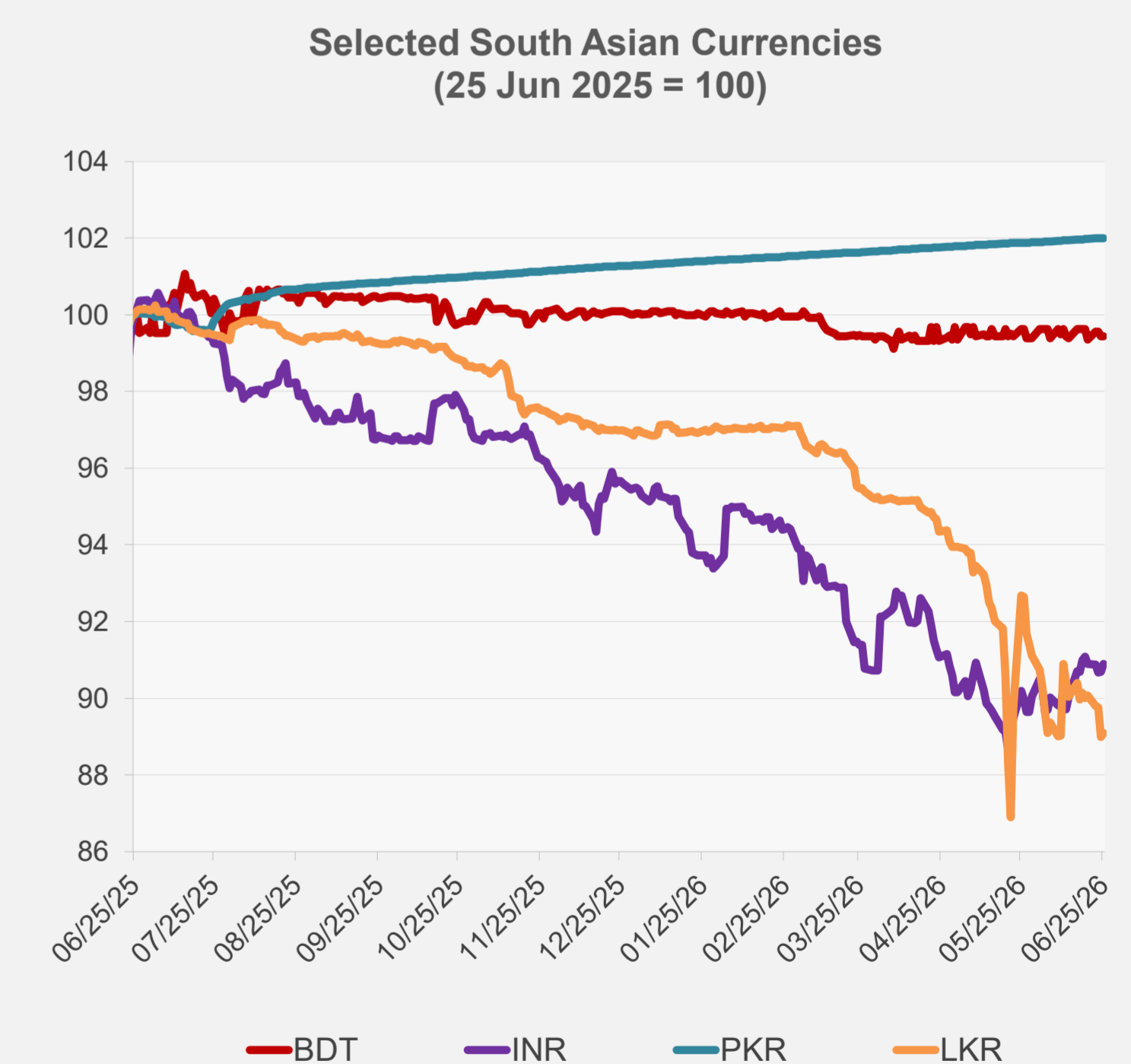
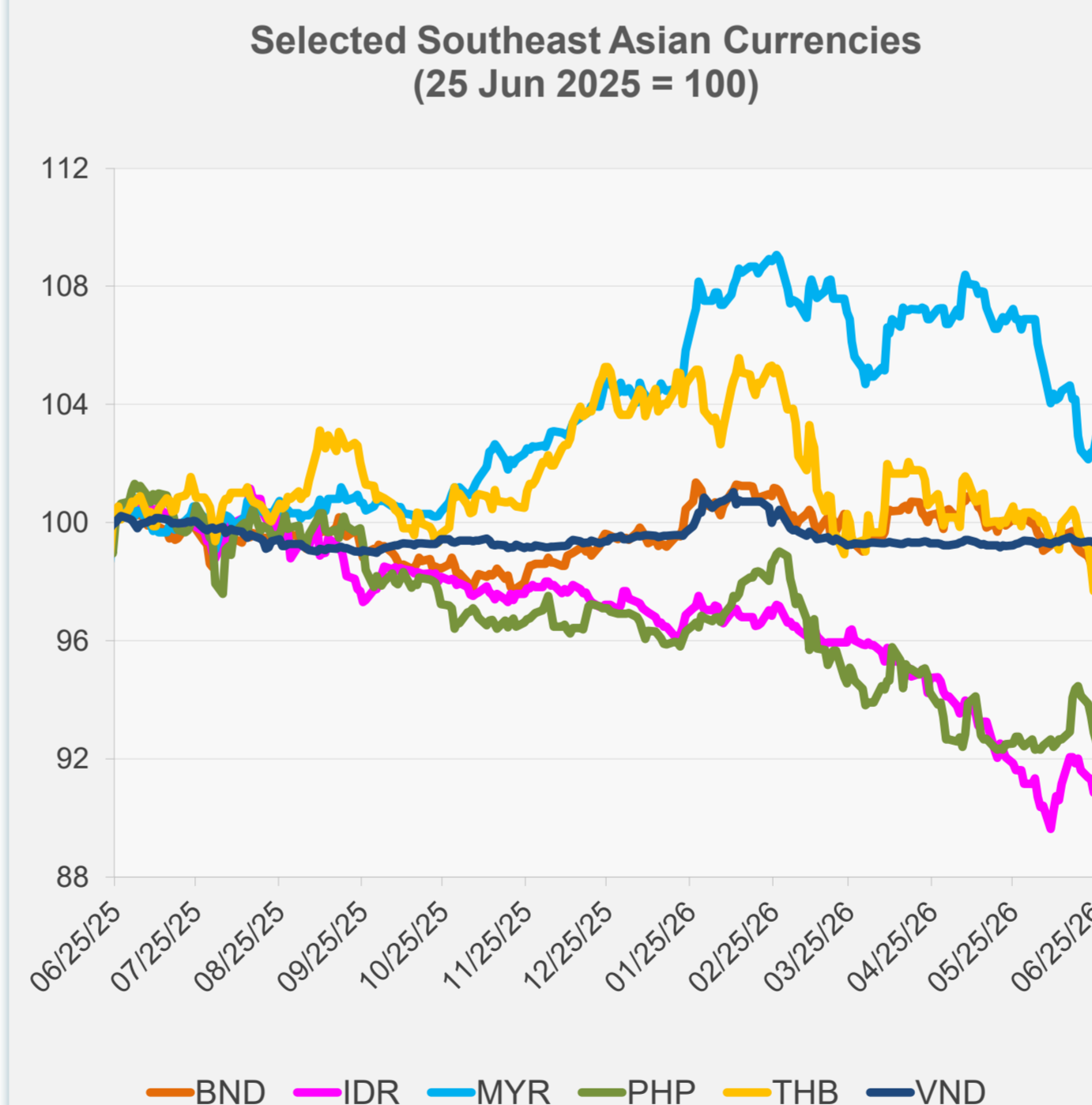


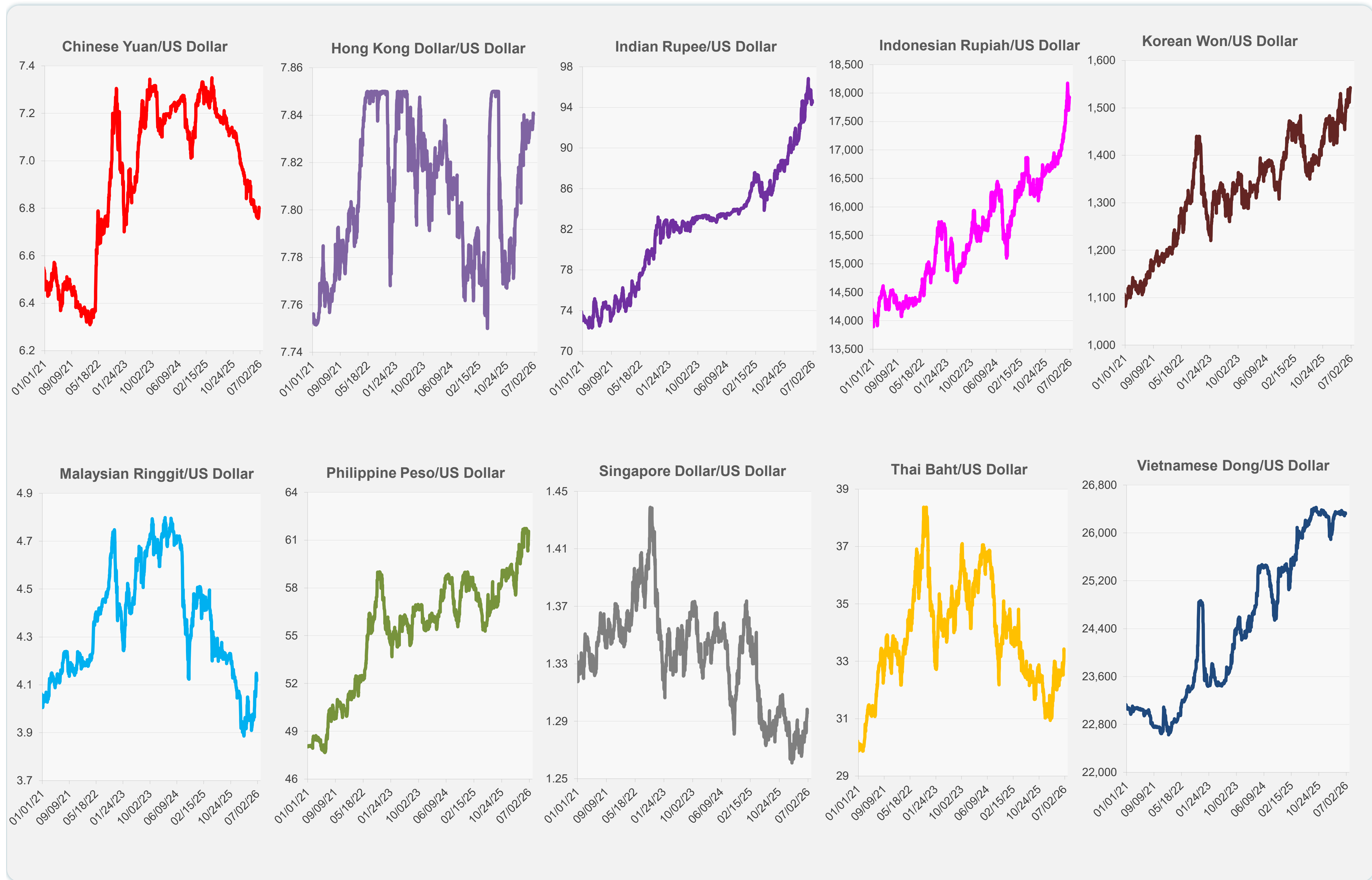
	Latest Closing	% change from Previous Day	% change from 01-Jan-26
Euro	0.88	0.31	-3.13
Japanese yen (JPY)	161.82	-0.06	-3.61
Bangladeshi taka (BDT)	123.00	0.00	-0.61
Brunei dollar (BND)	1.30	0.08	-0.87
Chinese yuan (CNY)	6.80	0.08	2.78
Hong Kong dollar (HKD)	7.84	-0.01	-0.73
Indian rupee (INR)	94.48	0.23	-4.76
Indonesian rupiah (IDR)	17,920.00	0.06	-6.95
Korean won (KRW)	1,542.70	-0.06	-6.72
Malaysian ringgit (MYR)	4.12	0.50	-1.45
Pakistan rupee (PKR)	278.17	0.00	0.69
Philippine peso (PHP)	61.56	-0.33	-4.47
Singapore dollar (SGD)	1.30	0.22	-0.73
Sri Lanka rupee (LKR)	337.00	0.11	-8.13
Taipei,China NT dollar (TWD)	31.84	-0.26	-1.25
Thai baht (THB)	33.36	0.22	-5.55
Vietnamese dong (VND)	26,320.00	0.06	-0.08



NIE = Newly Industrialized Economies

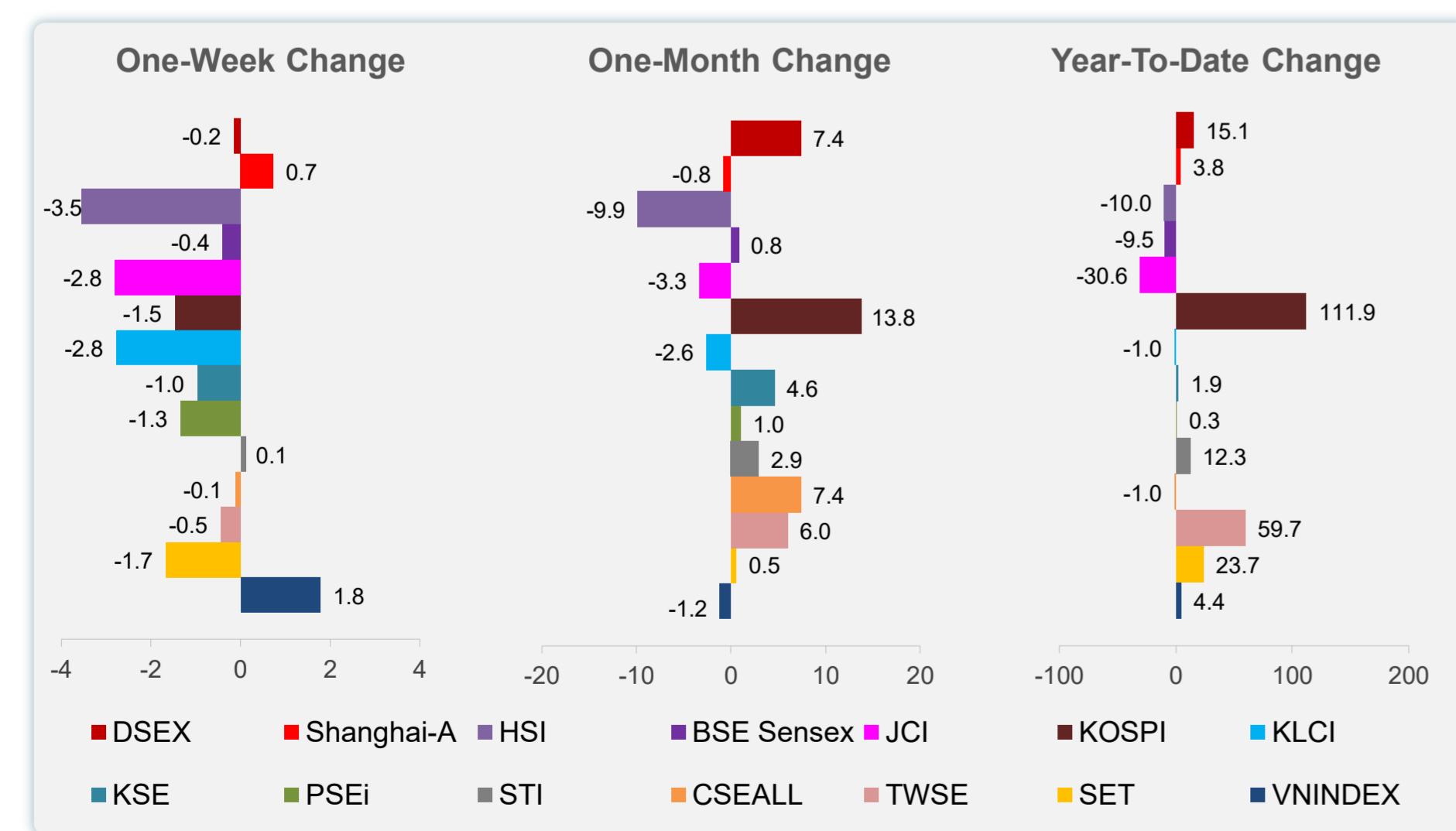
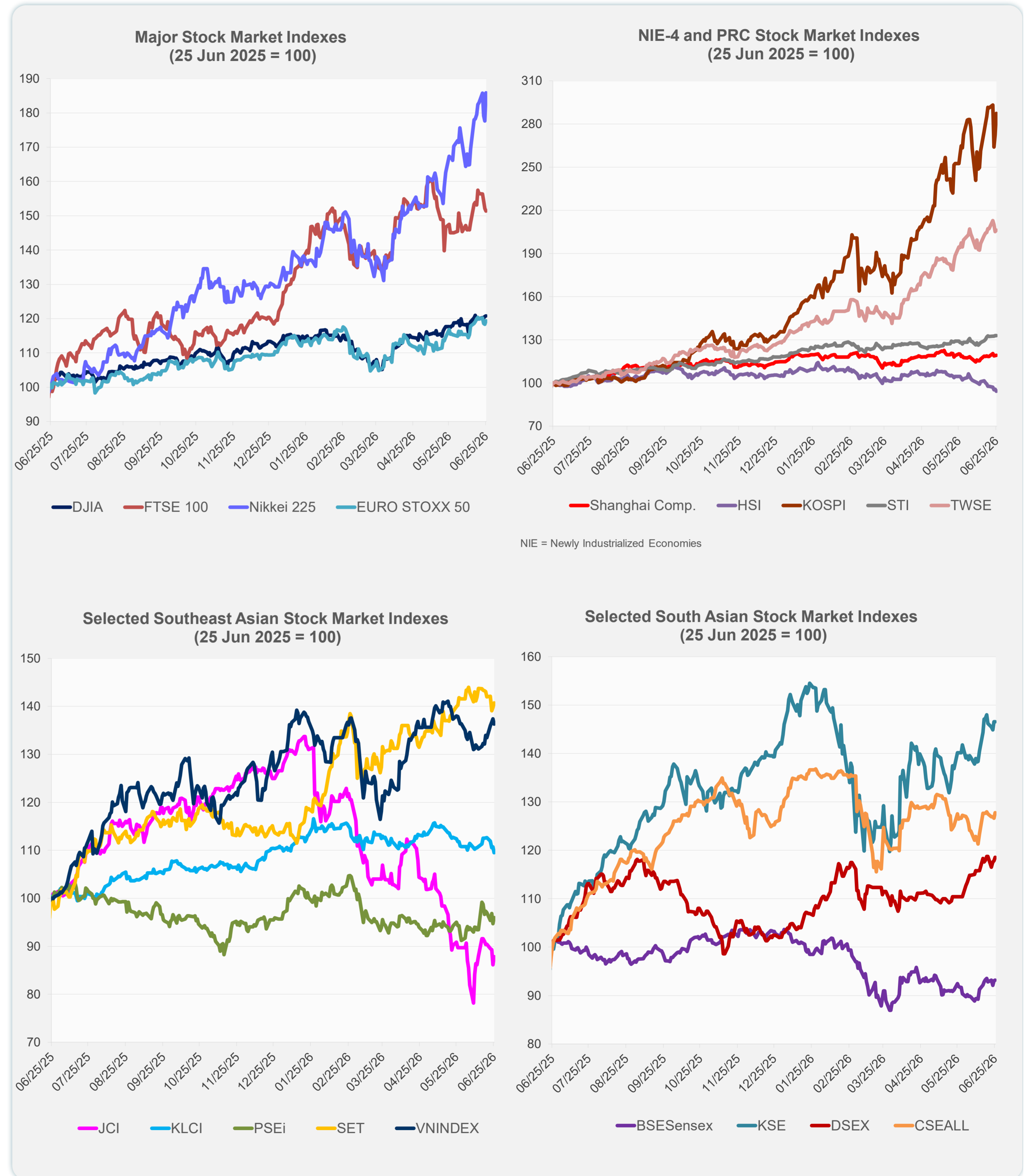


Note: Negative/Decreasing values indicate depreciation of local currency, and positive/increasing values indicate appreciation.
Source: ADB calculations using data from Bloomberg and Haver Analytics.

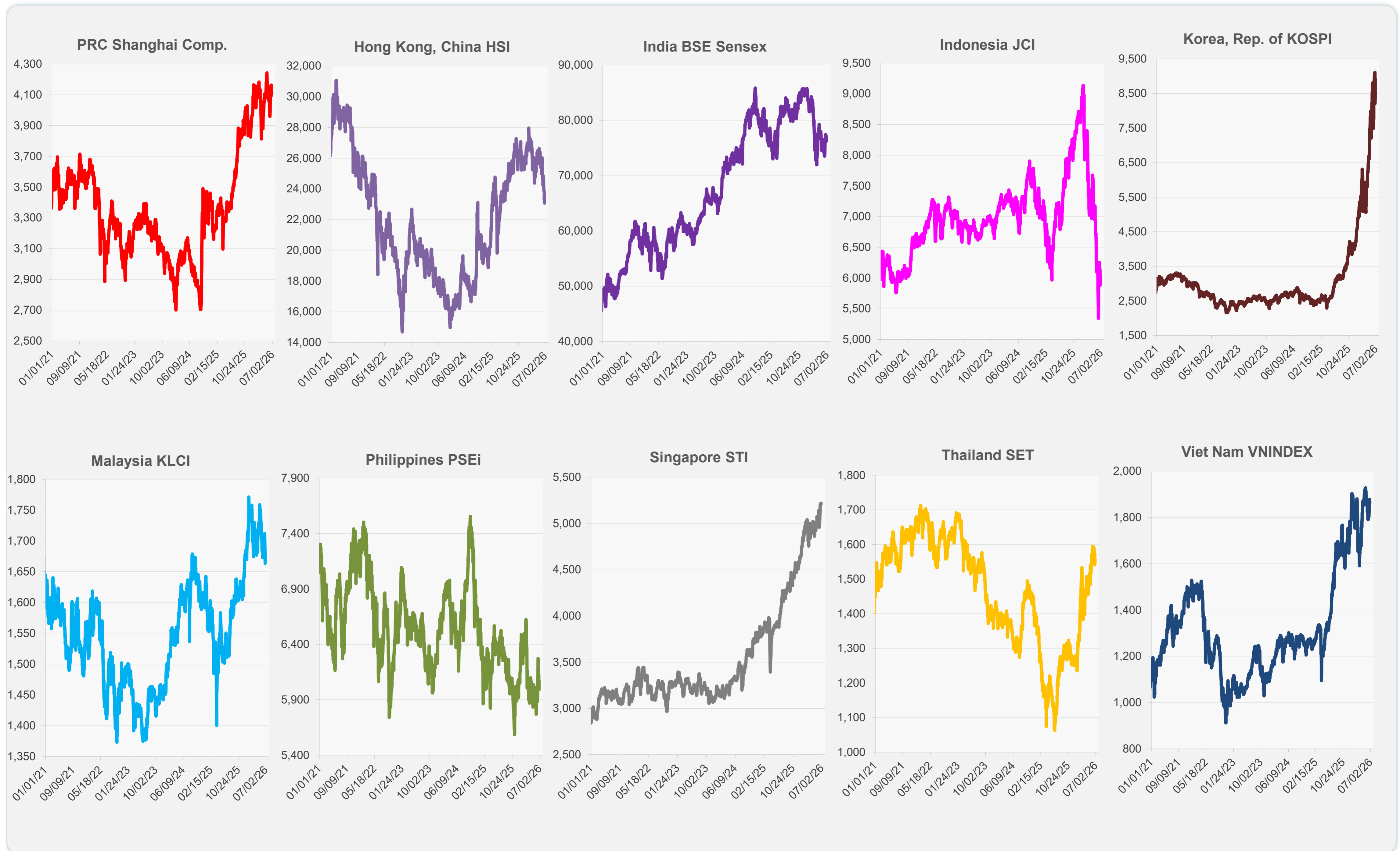


Source: Haver Analytics.

	Latest Closing	% change from Previous Day	% change from 01-Jan-26
US Dow Jones Ind Avg	51,920.62	0.14	8.03
US NASDAQ	25,358.60	-0.46	9.11
US S&P 500	7,357.49	-0.01	7.48
UK FTSE 100	14,259.75	-0.50	26.62
EURO STOXX 50	6,267.53	0.85	8.22
Japan NIKKEI 225	72,366.34	4.61	43.76
Bangladesh DSEX	5,652.82	0.64	15.11
PRC Shanghai Comp.	4,120.28	0.23	3.82
Hong Kong, China HSI	23,076.91	-1.43	-9.96
India BSE Sensex	77,100.47	0.14	-9.49
Indonesia JCI	5,999.04	1.96	-30.62
Korea, Rep. of KOSPI	8,930.30	5.42	111.91
Malaysia KLCI	1,663.82	-1.09	-0.97
Pakistan KSE 100	179,823.70	0.00	1.90
Philippines PSEi	6,071.06	1.33	0.30
Singapore STI	5,218.96	0.06	12.33
Sri Lanka CSEALL	22,407.04	0.89	-0.96
Taipei, China TWSE	46,255.26	0.46	59.70
Thailand SET	1,558.55	0.67	23.73
Viet Nam VNINDEX	1,863.07	-0.80	4.40



Sources: ADB calculations using data from Bloomberg and CEIC Data Company.

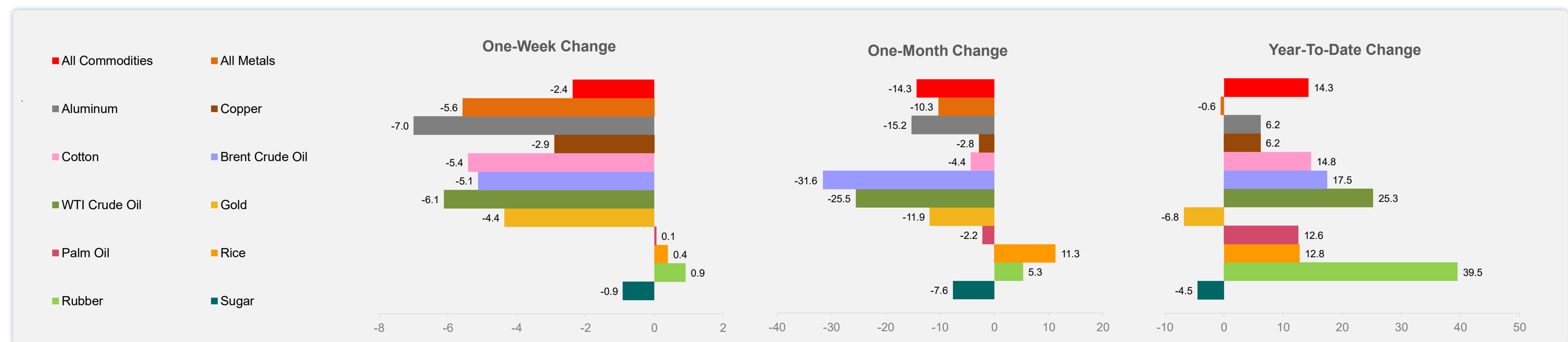
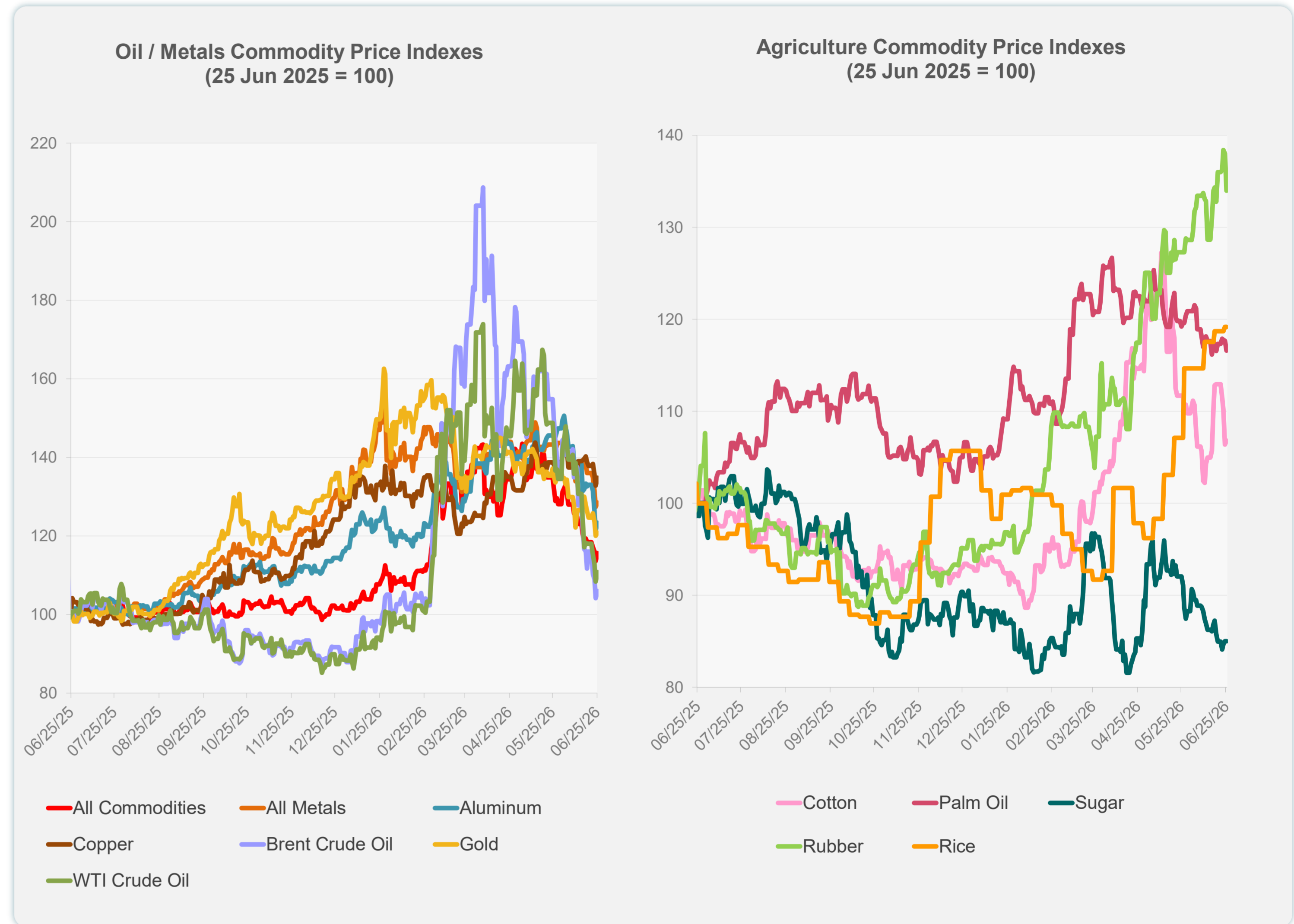


Sources: ADB calculations using data from Bloomberg and CEIC Data Company.

Daily Market Watch
COMMODITY PRICES

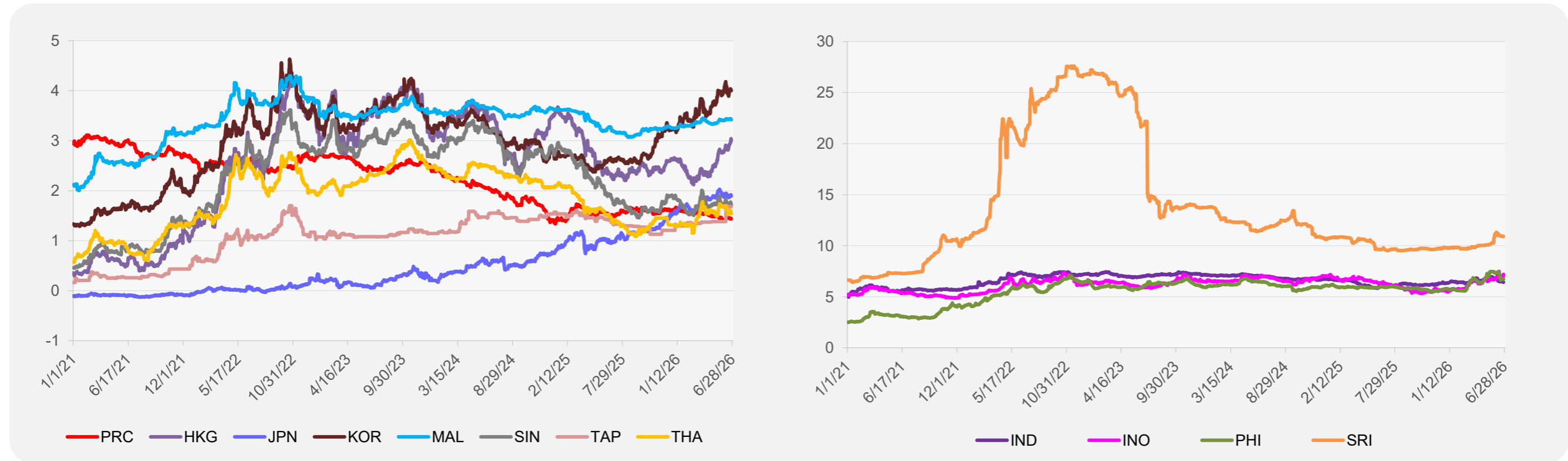
	Unit	Latest Closing	% change from Previous Day	% change from 01-Jan-26
S&P All Commodities	US\$	626.96	1.75	14.30
S&P All Metals	US\$	441.27	0.88	-0.56
Aluminum	US\$/metric ton	3,153.20	1.53	6.24
Copper	US\$/metric ton	13,227.58	1.52	6.22
Cotton	US cents/lb	71.17	0.39	14.75
Brent Crude Oil	US\$/barrel	73.35	1.69	17.46
WTI Crude Oil	US\$/barrel	71.92	2.25	25.25
Gold	US\$/troy oz	4,026.73	0.68	-6.78
Palm Oil	US\$/metric tonne	1,090.85	-0.91	12.62
Rice ¹	US\$/metric ton	503.00	0.00	12.78
Rubber ²	US\$/kg	300.00	-2.91	39.53
Sugar	US cents/lb	14.13	0.00	-4.46

¹ Latest closing price from 24 June 2026.
² Singapore Exchange, Ribbed Smoked Sheet Rubber.

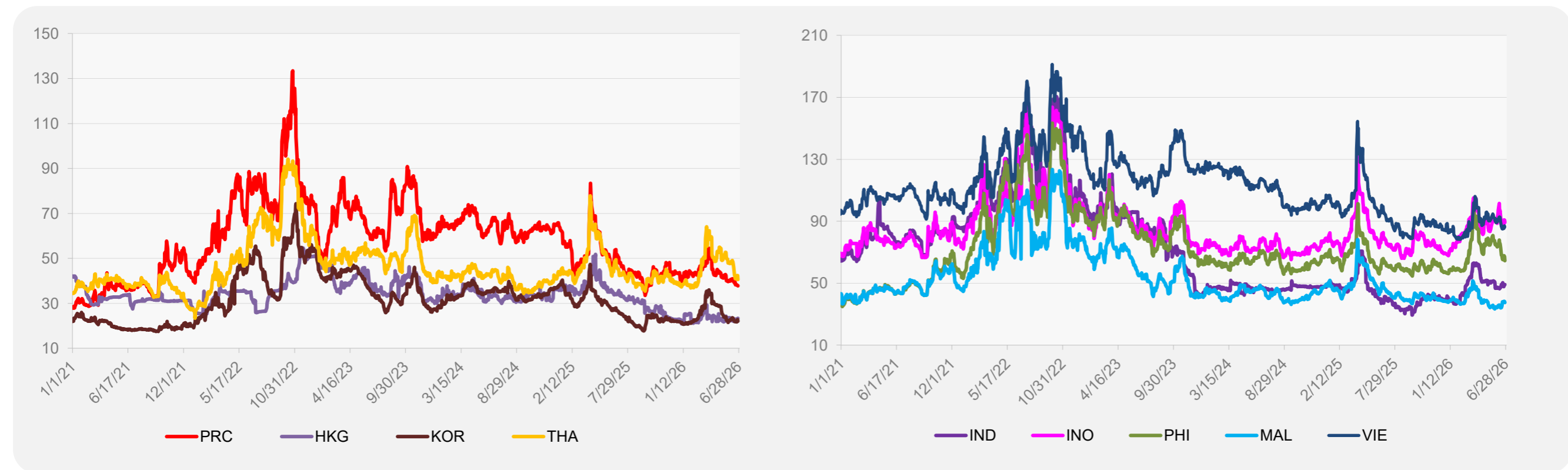


Source: ADB calculations using data from Bloomberg.

5-YEAR LOCAL CURRENCY GOVERNMENT BOND YIELDS (%)



5-YEAR CREDIT DEFAULT SWAP¹



¹ In USD and based on sovereign bonds.
Source: ADB calculations using data from Bloomberg.